

PIP

7.8 nm

CHARTLET #1



"NOT TO BE USED FOR NAVIGATION"

NORTH JETTY

LB8

LB7

SOUTH JETTY

GALVESTON BAY ENTRANCE CHANNEL

LB2C

LB1C

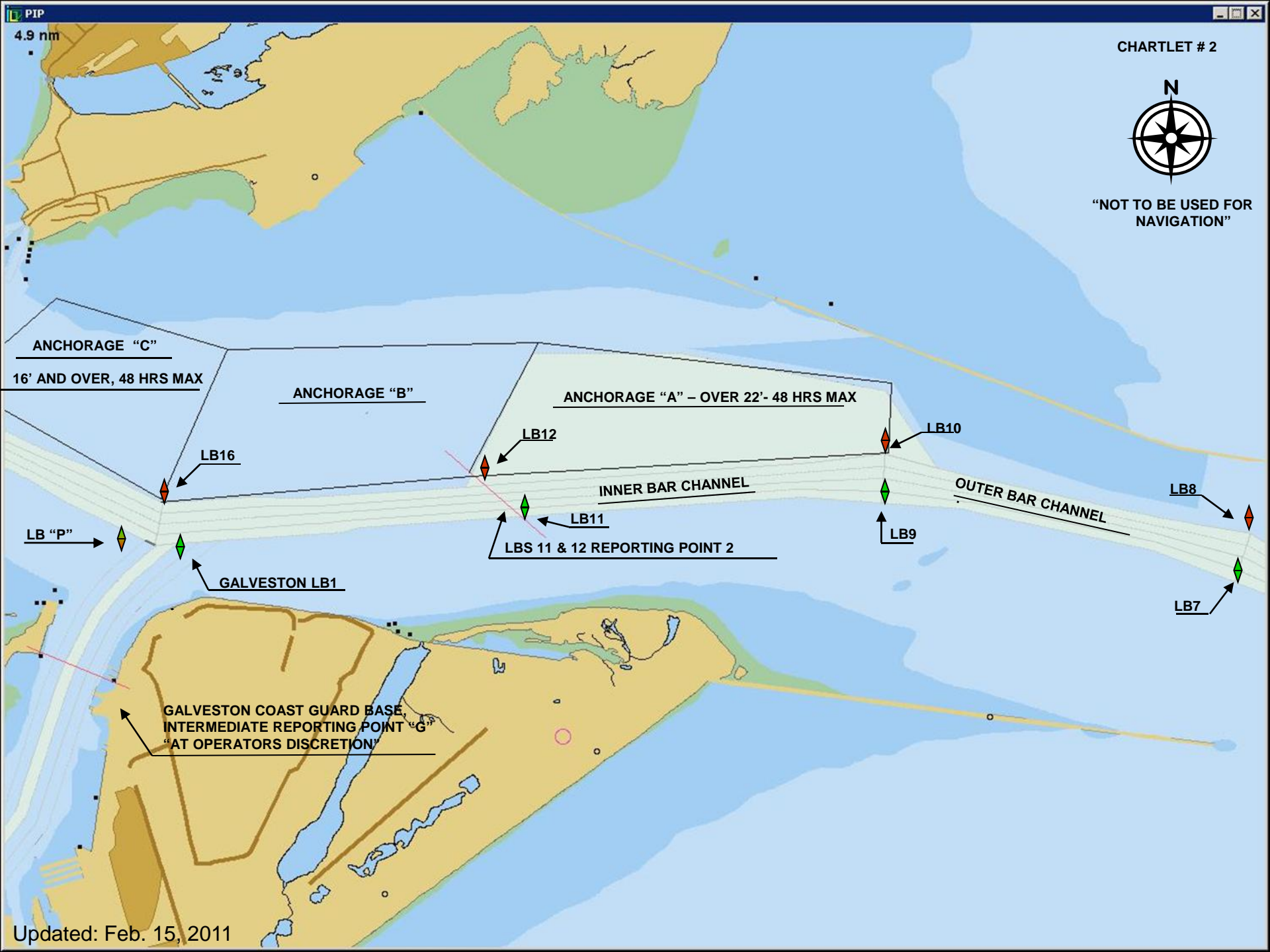
GULF OF MEXICO (SEA)

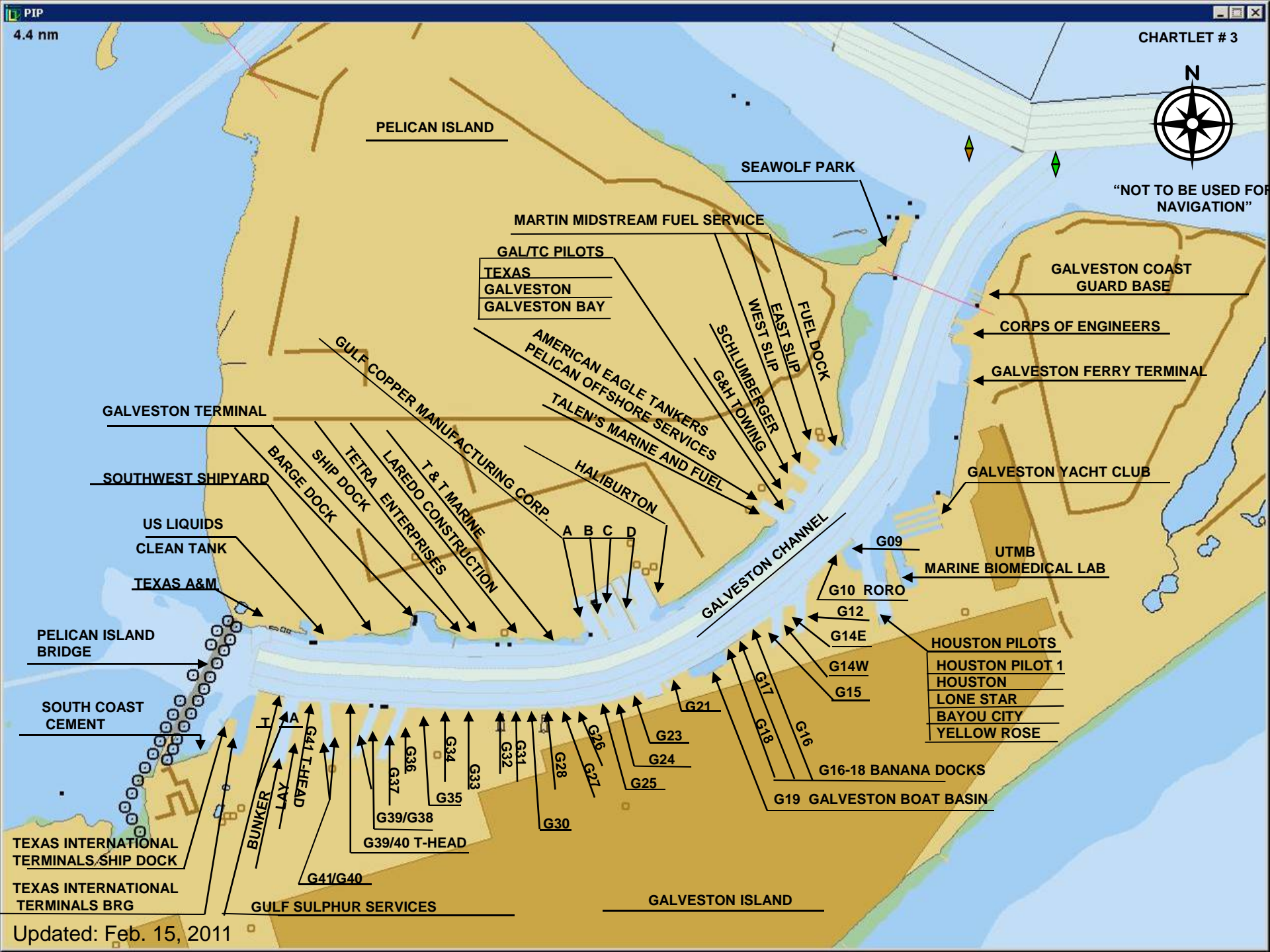
LB1 & LB2 REPORTING POINT 1

LB2

LB1

Updated: Feb. 15, 2011





"NOT TO BE USED FOR NAVIGATION"

PELICAN ISLAND

SEAWOLF PARK

MARTIN MIDSTREAM FUEL SERVICE

GAL/TC PILOTS

- TEXAS
- GALVESTON
- GALVESTON BAY

GALVESTON COAST GUARD BASE

CORPS OF ENGINEERS

GALVESTON FERRY TERMINAL

GALVESTON TERMINAL

SOUTHWEST SHIPYARD

US LIQUIDS

CLEAN TANK

TEXAS A&M

PELICAN ISLAND BRIDGE

SOUTH COAST CEMENT

TEXAS INTERNATIONAL TERMINALS SHIP DOCK

TEXAS INTERNATIONAL TERMINALS BRG

GULF SULPHUR SERVICES

AMERICAN EAGLE TANKERS  
PELICAN OFFSHORE SERVICES

TALEN'S MARINE AND FUEL

HALIBURTON

GULF COPPER MANUFACTURING CORP.

BARGE DOCK

SHIP DOCK

TETRA ENTERPRISES

LAREDO ENTERPRISES

T & T MARINE

TALON CONSTRUCTION

A B C D

GALVESTON CHANNEL

GALVESTON YACHT CLUB

UTMB  
MARINE BIOMEDICAL LAB

G09

G10 RORO

G12

G14E

G14W

G15

HOUSTON PILOTS  
HOUSTON PILOT 1  
HOUSTON  
LONE STAR  
BAYOU CITY  
YELLOW ROSE

G16-18 BANANA DOCKS

G19 GALVESTON BOAT BASIN

G21

G17

G18

G16

G23

G24

G25

G26

G27

G28

G31

G32

G33

G34

G35

G36

G37

G38

G39

G40

G41

G42

G43

G44

G45

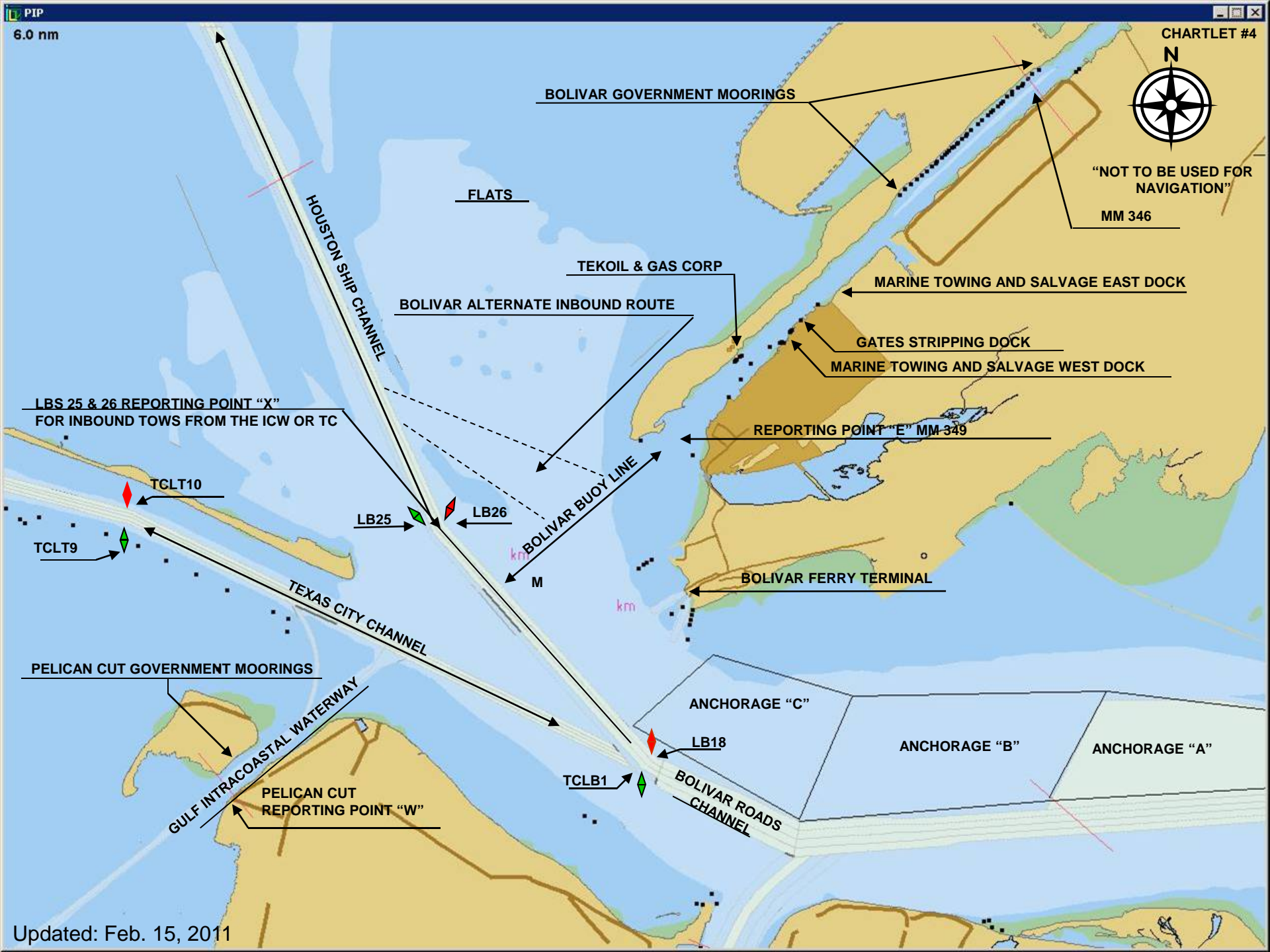
G46

G47

G48

G49

G50



6.0 nm

CHARTLET #4



"NOT TO BE USED FOR NAVIGATION"  
MM 346

BOLIVAR GOVERNMENT MOORINGS

FLATS

TEKOIL & GAS CORP

BOLIVAR ALTERNATE INBOUND ROUTE

MARINE TOWING AND SALVAGE EAST DOCK

GATES STRIPPING DOCK

MARINE TOWING AND SALVAGE WEST DOCK

LBS 25 & 26 REPORTING POINT "X"  
FOR INBOUND TOWS FROM THE ICW OR TC

REPORTING POINT "E" MM 349

TGLT10

LB25

LB26

BOLIVAR BUOY LINE

BOLIVAR FERRY TERMINAL

TGLT9

TEXAS CITY CHANNEL

PELICAN CUT GOVERNMENT MOORINGS

ANCHORAGE "C"

LB18

ANCHORAGE "B"

ANCHORAGE "A"

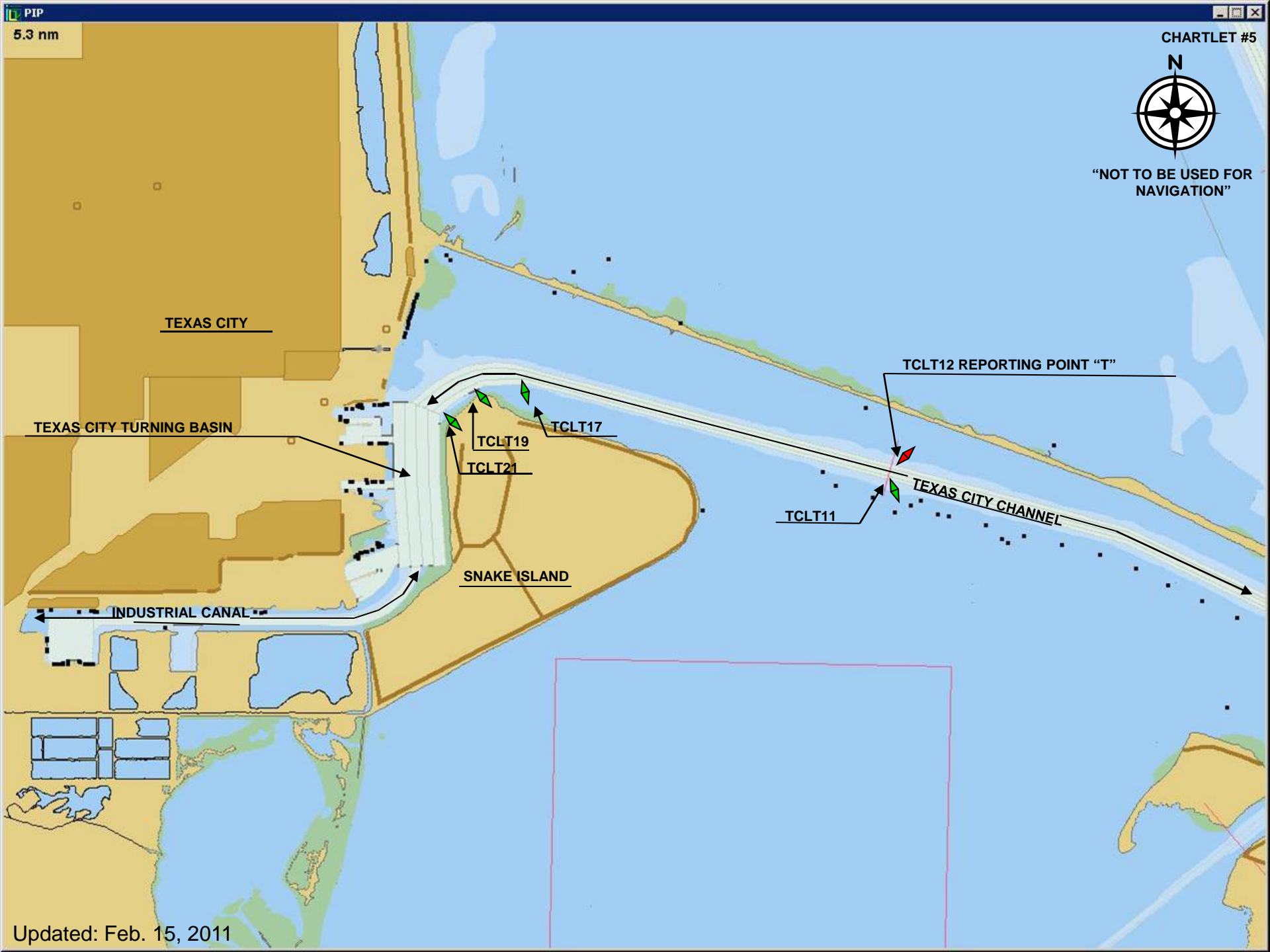
GULF INTRACOASTAL WATERWAY

PELICAN CUT REPORTING POINT "W"

TCLB1

BOLIVAR ROADS CHANNEL

Updated: Feb. 15, 2011



PIP

5.3 nm

CHARTLET #5



NOT TO BE USED FOR NAVIGATION

TEXAS CITY

TEXAS CITY TURNING BASIN

INDUSTRIAL CANAL

SNAKE ISLAND

TCLT12 REPORTING POINT "T"

TCLT19

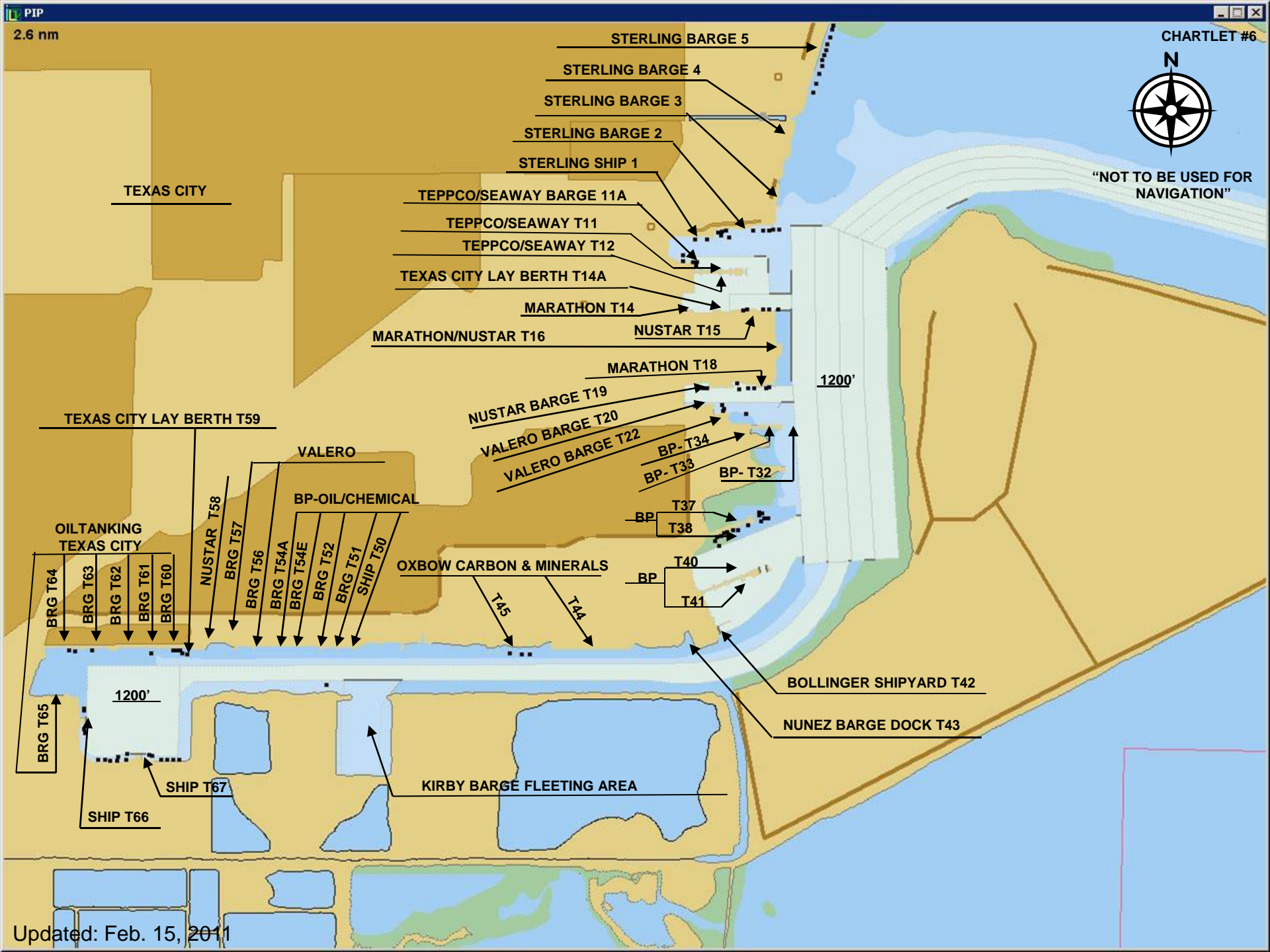
TCLT17

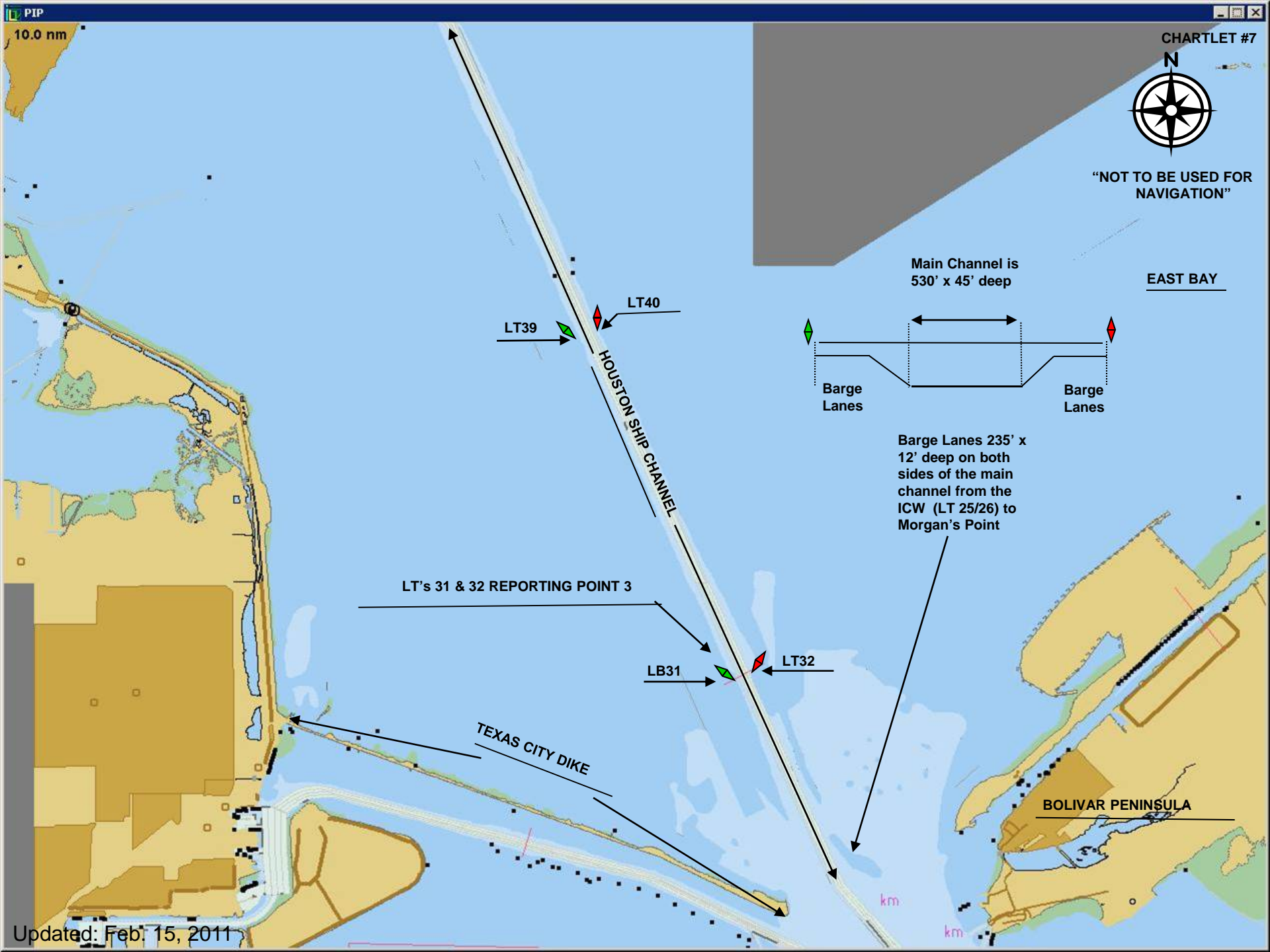
TCLT21

TCLT11

TEXAS CITY CHANNEL

Updated: Feb. 15, 2011





PIP

10.0 nm

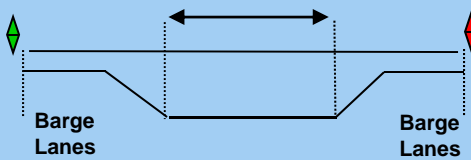
CHARTLET #7



"NOT TO BE USED FOR NAVIGATION"

EAST BAY

Main Channel is 530' x 45' deep



Barge Lanes 235' x 12' deep on both sides of the main channel from the ICW (LT 25/26) to Morgan's Point

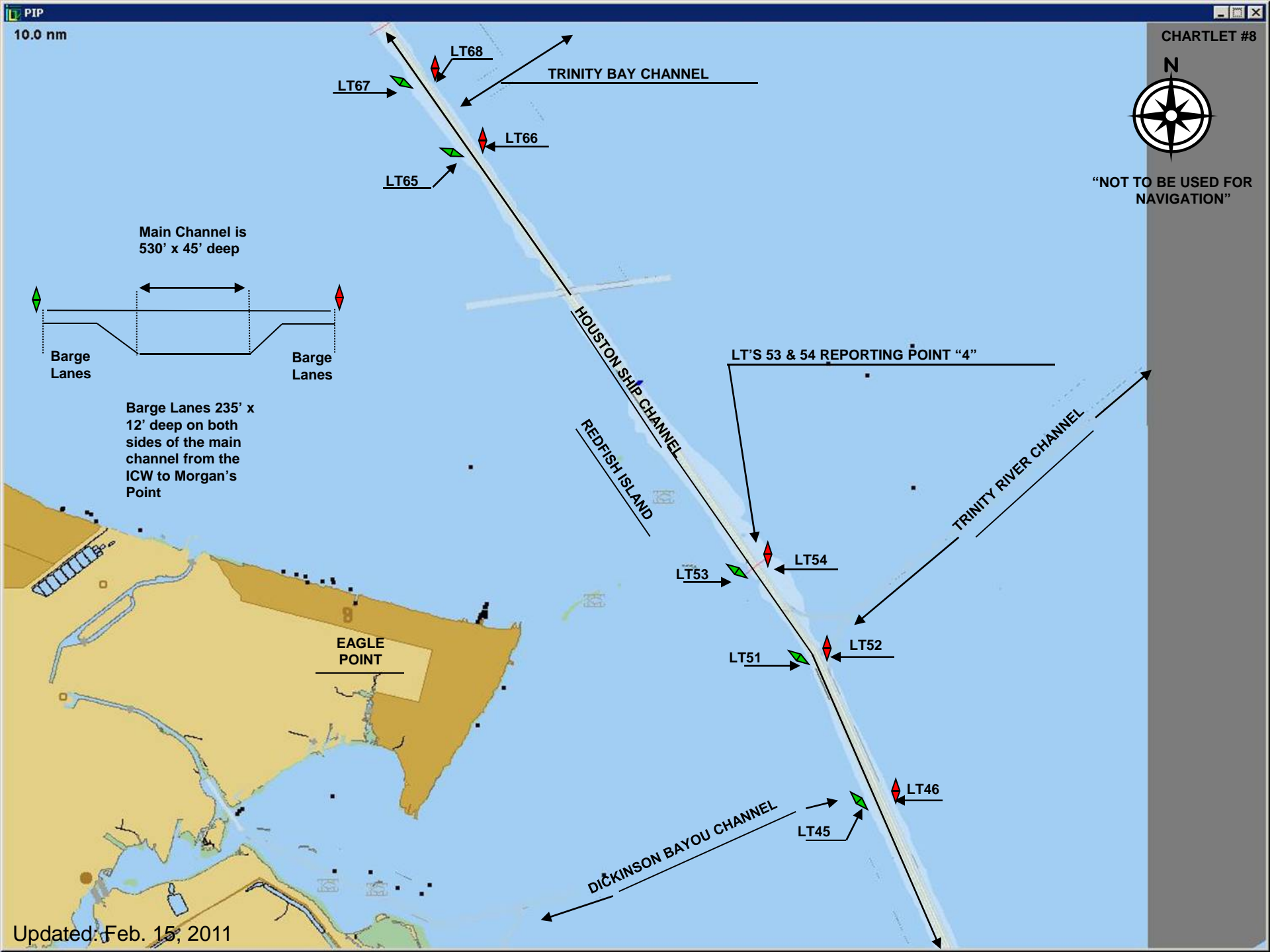
LT's 31 & 32 REPORTING POINT 3

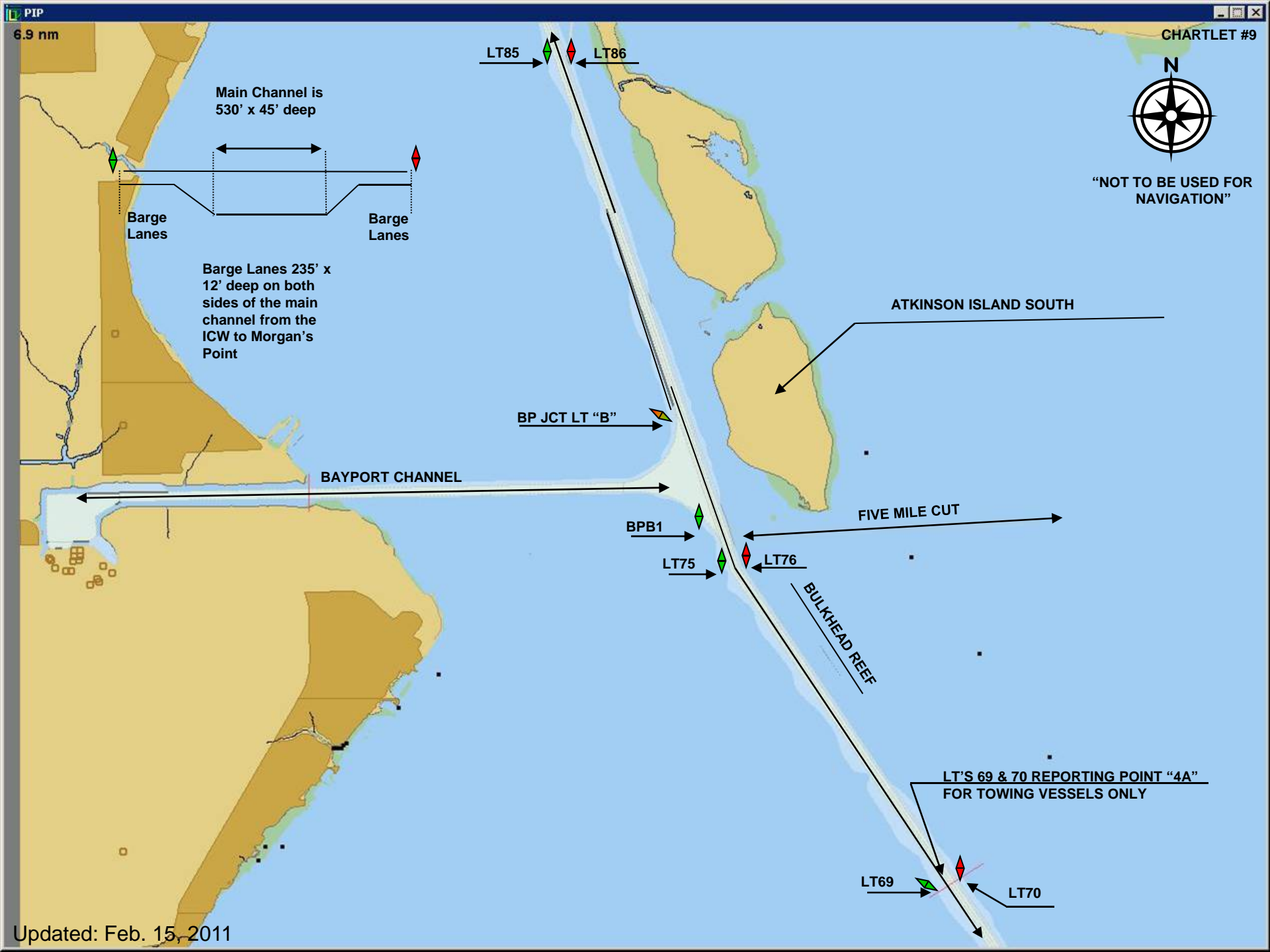
TEXAS CITY DIKE

BOLIVAR PENINSULA

Updated: Feb. 15, 2011









"NOT TO BE USED FOR NAVIGATION"

HOUSTON YACHT CLUB

Tows pushing-in west of this point shall monitor channel 13 at all times

REPORTING POINT "P"

BPLT8

BPLT9

BAYPORT CHANNEL

LBC HOUSTON

SHIP 3

BRG 5

BRG 4

BRG 3

SHIP 2

BRG 2

BRG 1

SHIP 1

1500'

BCT 7

BCT 6

BCT 5

BCT 4

BCT 3

BCT 2

BCT 1

BCS 1

BCS 2

BCS 3

BAYPORT CONTAINER TERMINAL

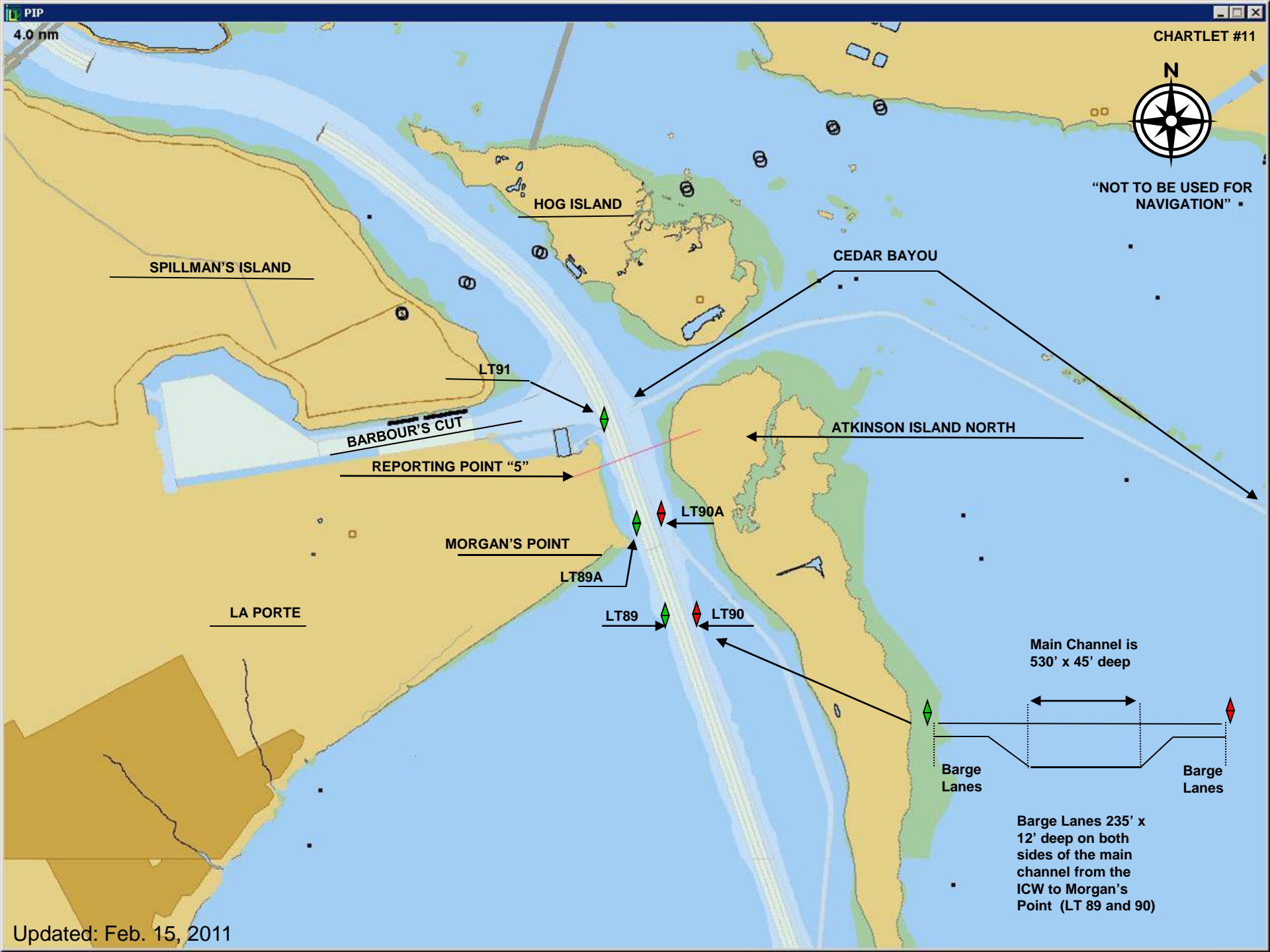
ODFJELL BRG 2

ODFJELL BRG 1

ODFJELL SHIP 2

ODFJELL SHIP 1

BAYPORT CRUISE SHIP TERMINAL



"NOT TO BE USED FOR NAVIGATION"

SPILLMAN'S ISLAND

HOG ISLAND

CEDAR BAYOU

LT91

BARBOUR'S CUT

REPORTING POINT "5"

ATKINSON ISLAND NORTH

MORGAN'S POINT

LT90A

LT89A

LA PORTE

LT89

LT90

Main Channel is 530' x 45' deep

Barge Lanes

Barge Lanes

Barge Lanes 235' x 12' deep on both sides of the main channel from the ICW to Morgan's Point (LT 89 and 90)



"NOT TO BE USED FOR NAVIGATION"

LT95 →

← LT96

MORGAN'S POINT HIGHLINES 197'

→ LT93

← LT94

BARBOUR'S CUT JCT LT "BC"

ENTERPRISE PRODUCTS BARBOURS CUT TERMINAL

BARBOUR'S CUT TURNING BASIN 1500'

BARBOUR'S CUT

CRUISE SHIP DOCK (AKA CONT DOCK 7)

CONTAINER DOCK 6

CONTAINER DOCK 5

CONTAINER DOCK 4

CONTAINER DOCK 3

CONTAINER DOCK 2

CONTAINER DOCK 1

RORO DOCK

LASH DOCK

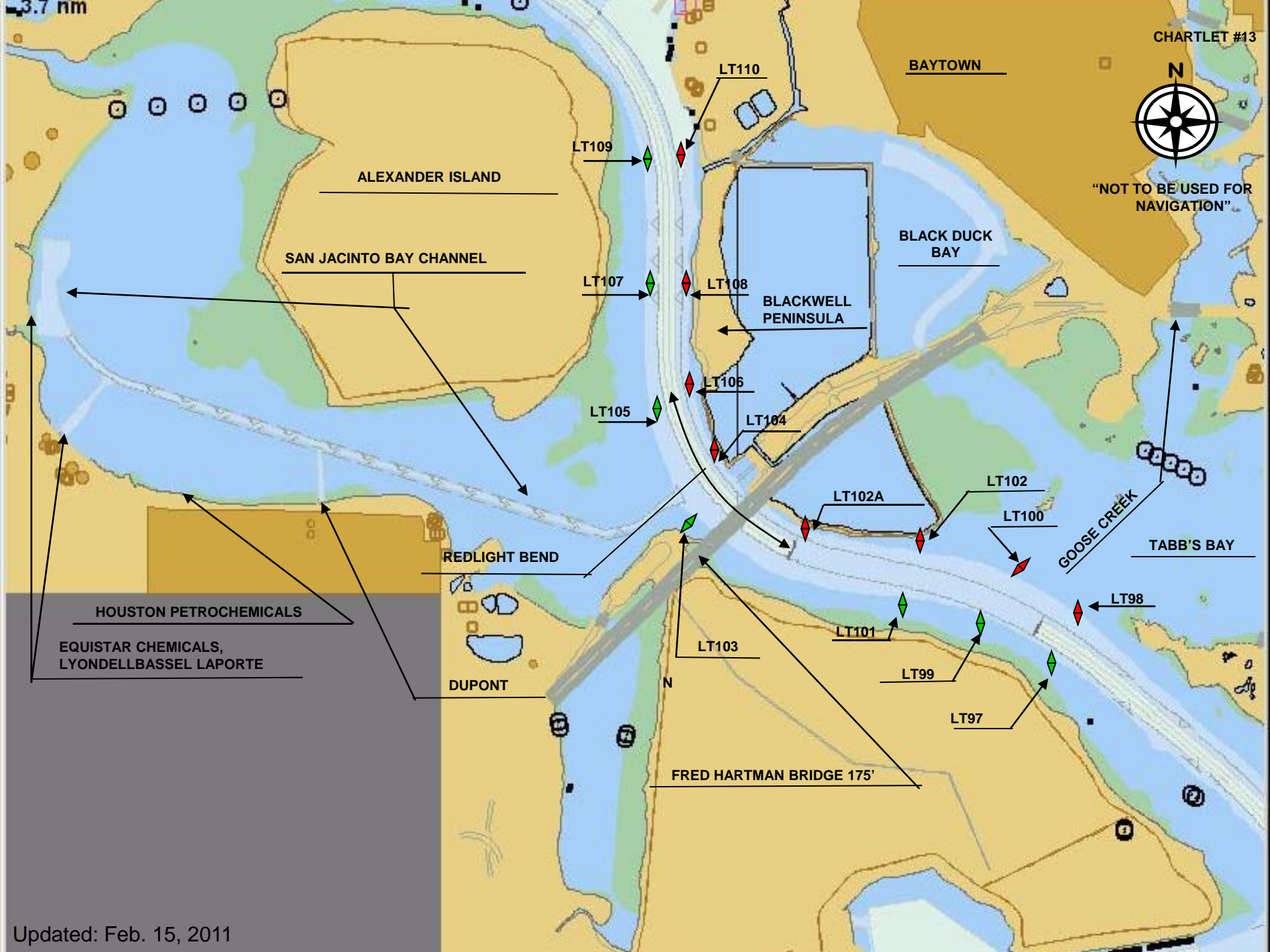
FIREBOAT TELLESPEN

3.7 nm

CHARTLET #13



"NOT TO BE USED FOR NAVIGATION"



ALEXANDER ISLAND

SAN JACINTO BAY CHANNEL

BAYTOWN

BLACK DUCK BAY

BLACKWELL PENINSULA

REDLIGHT BEND

HOUSTON PETROCHEMICALS

EQUISTAR CHEMICALS,  
LYONDELLBASEL LAPORTE

DUPONT

FRED HARTMAN BRIDGE 175'

GOOSE CREEK

TABB'S BAY

LT109

LT110

LT107

LT108

LT105

LT106

LT104

LT102A

LT102

LT100

LT98

LT101

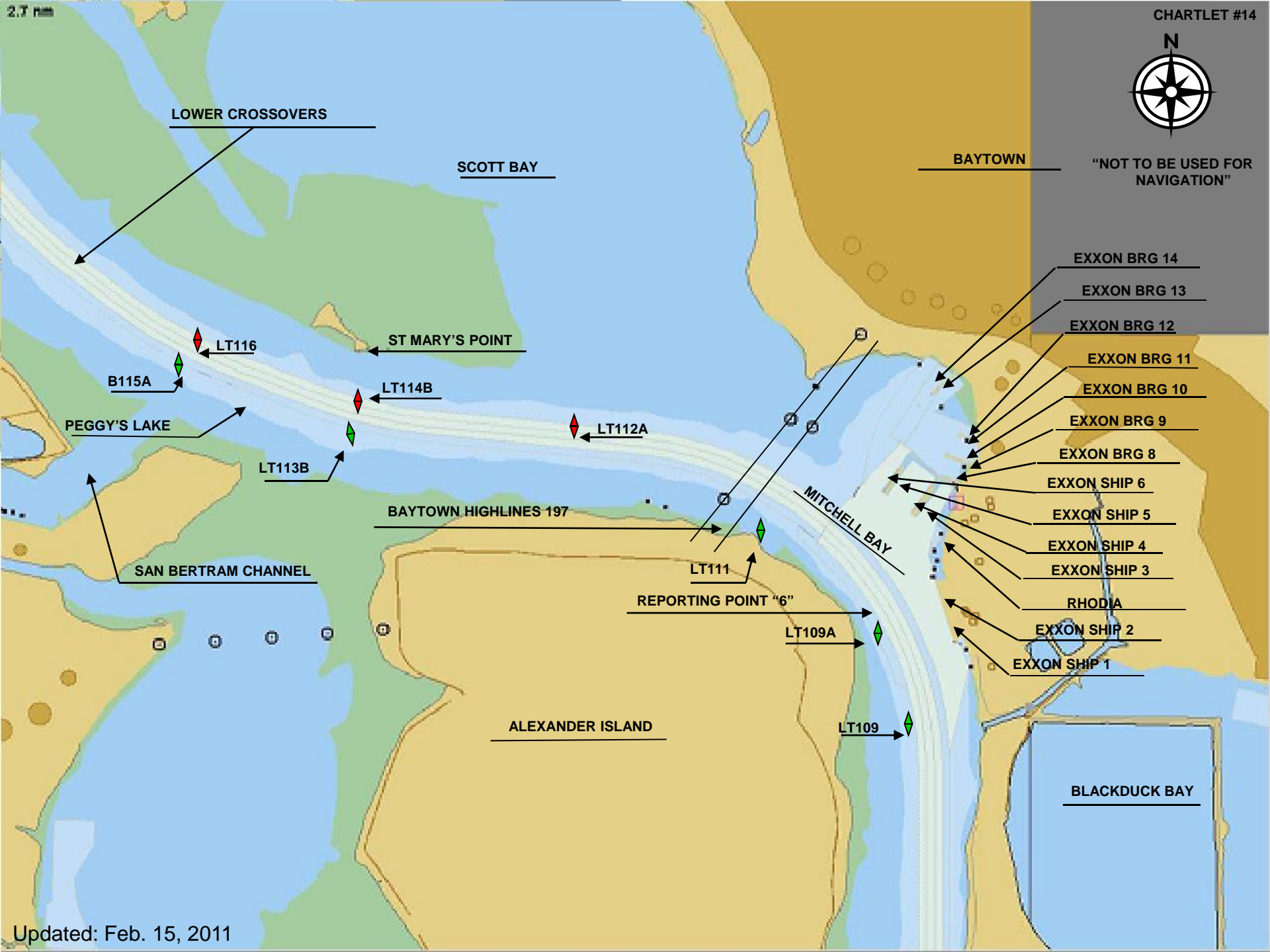
LT103

LT99

LT97



NOT TO BE USED FOR NAVIGATION



LOWER CROSSOVERS

SCOTT BAY

BAYTOWN

EXXON BRG 14

EXXON BRG 13

EXXON BRG 12

EXXON BRG 11

EXXON BRG 10

EXXON BRG 9

EXXON BRG 8

EXXON SHIP 6

EXXON SHIP 5

EXXON SHIP 4

EXXON SHIP 3

RHODIA

EXXON SHIP 2

EXXON SHIP 1

LT116

ST MARY'S POINT

B115A

LT114B

PEGGY'S LAKE

LT112A

LT113B

BAYTOWN HIGHLINES 197

MITCHELL BAY

SAN BERTRAM CHANNEL

LT111

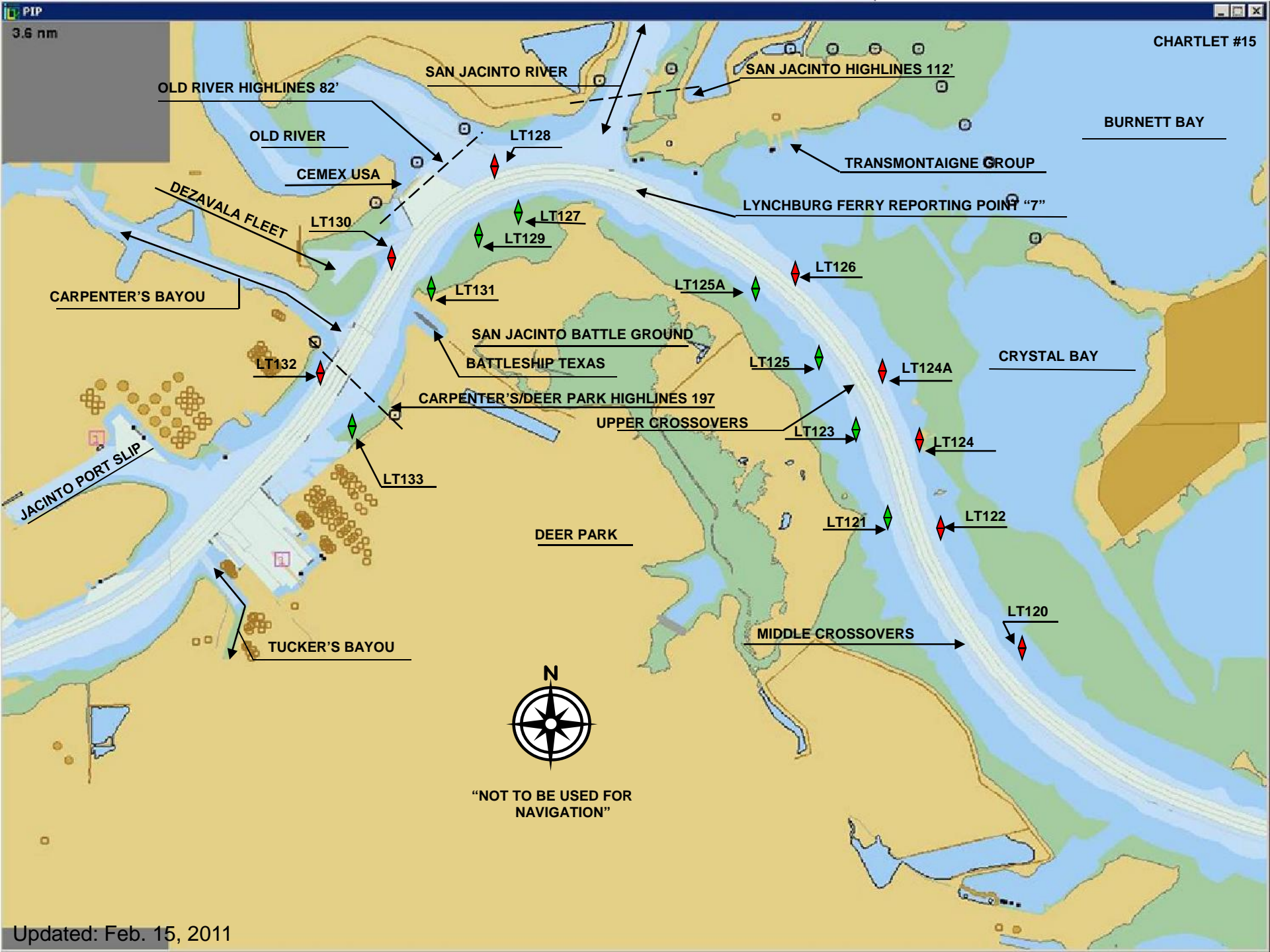
REPORTING POINT "6"

LT109A

ALEXANDER ISLAND

LT109

BLACKDUCK BAY



OLD RIVER HIGHLINES 82'

SAN JACINTO RIVER

SAN JACINTO HIGHLINES 112'

BURNETT BAY

OLD RIVER

CEMEX USA

TRANSMONTAIGNE GROUP

DEZAVALA FLEET

LYNCHBURG FERRY REPORTING POINT "7"

CARPENTER'S BAYOU

SAN JACINTO BATTLE GROUND  
BATTLESHIP TEXAS

CRYSTAL BAY

JACINTO PORT SLIP

CARPENTER'S/DEER PARK HIGHLINES 197

UPPER CROSSOVERS

DEER PARK

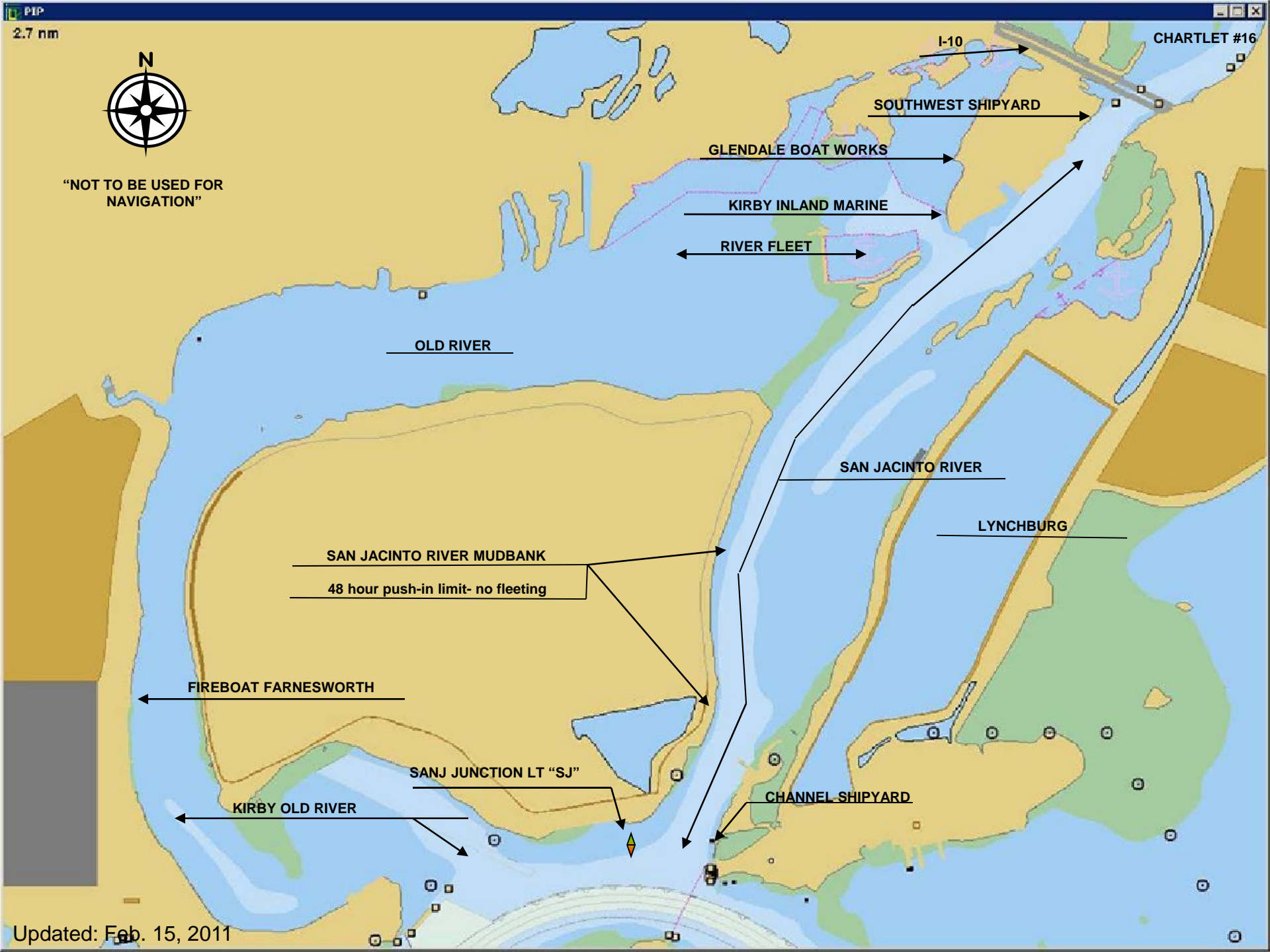
MIDDLE CROSSOVERS

TUCKER'S BAYOU



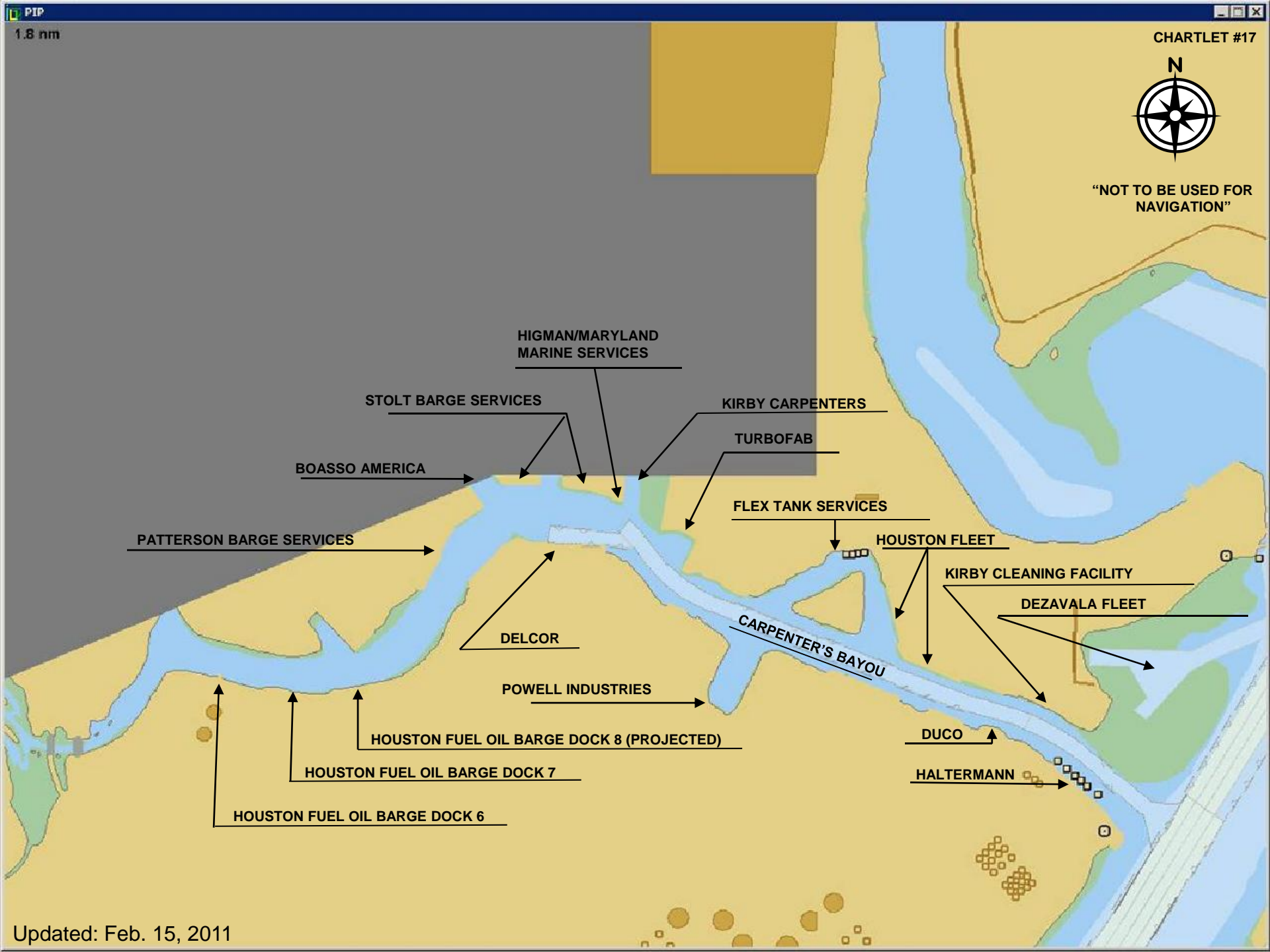
"NOT TO BE USED FOR NAVIGATION"







"NOT TO BE USED FOR NAVIGATION"



HIGMAN/MARYLAND MARINE SERVICES

STOLT BARGE SERVICES

KIRBY CARPENTERS

TURBOFAB

BOASSO AMERICA

FLEX TANK SERVICES

PATTERSON BARGE SERVICES

HOUSTON FLEET

KIRBY CLEANING FACILITY

DEZAVALA FLEET

DELCOR

CARPENTER'S BAYOU

POWELL INDUSTRIES

DUCO

HOUSTON FUEL OIL BARGE DOCK 8 (PROJECTED)

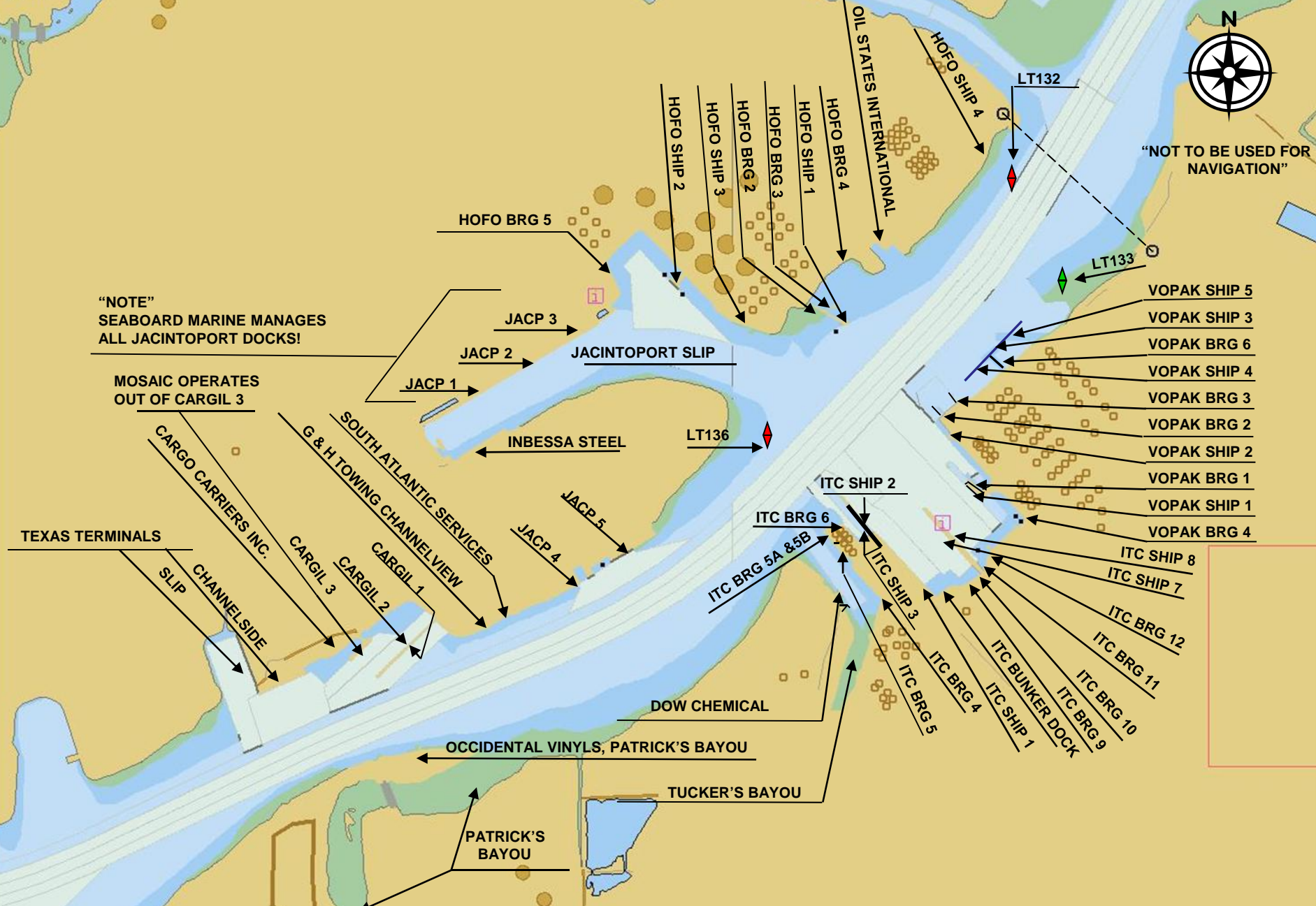
HOUSTON FUEL OIL BARGE DOCK 7

HALTERMANN

HOUSTON FUEL OIL BARGE DOCK 6



"NOT TO BE USED FOR NAVIGATION"



"NOTE" SEABOARD MARINE MANAGES ALL JACINTOPORT DOCKS!

MOSAIC OPERATES OUT OF CARGIL 3

TEXAS TERMINALS

SOUTH ATLANTIC SERVICES  
 G & H TOWING CHANNEL SERVICES  
 CARGIL 1  
 CARGIL 2  
 CARGIL 3  
 CHANNELSIDE  
 SLIP

JACP 5

JACP 4

JACP 3

JACP 2

JACP 1

DOW CHEMICAL

OCCIDENTAL VINYL, PATRICK'S BAYOU

PATRICK'S BAYOU

TUCKER'S BAYOU

ITC BRG 6

ITC BRG 5A & 5B

ITC SHIP 2

ITC SHIP 3

ITC BRG 4

ITC BRG 5

ITC BRG 12

ITC BRG 11

ITC BRG 10

ITC BRG 9

ITC SHIP 1

ITC BUNKER DOCK

ITC SHIP 8

ITC SHIP 7

ITC BRG 12

ITC BRG 11

ITC BRG 10

ITC BRG 9

ITC SHIP 1

ITC BUNKER DOCK

VOPAK SHIP 5

VOPAK SHIP 3

VOPAK BRG 6

VOPAK SHIP 4

VOPAK BRG 3

VOPAK BRG 2

VOPAK SHIP 2

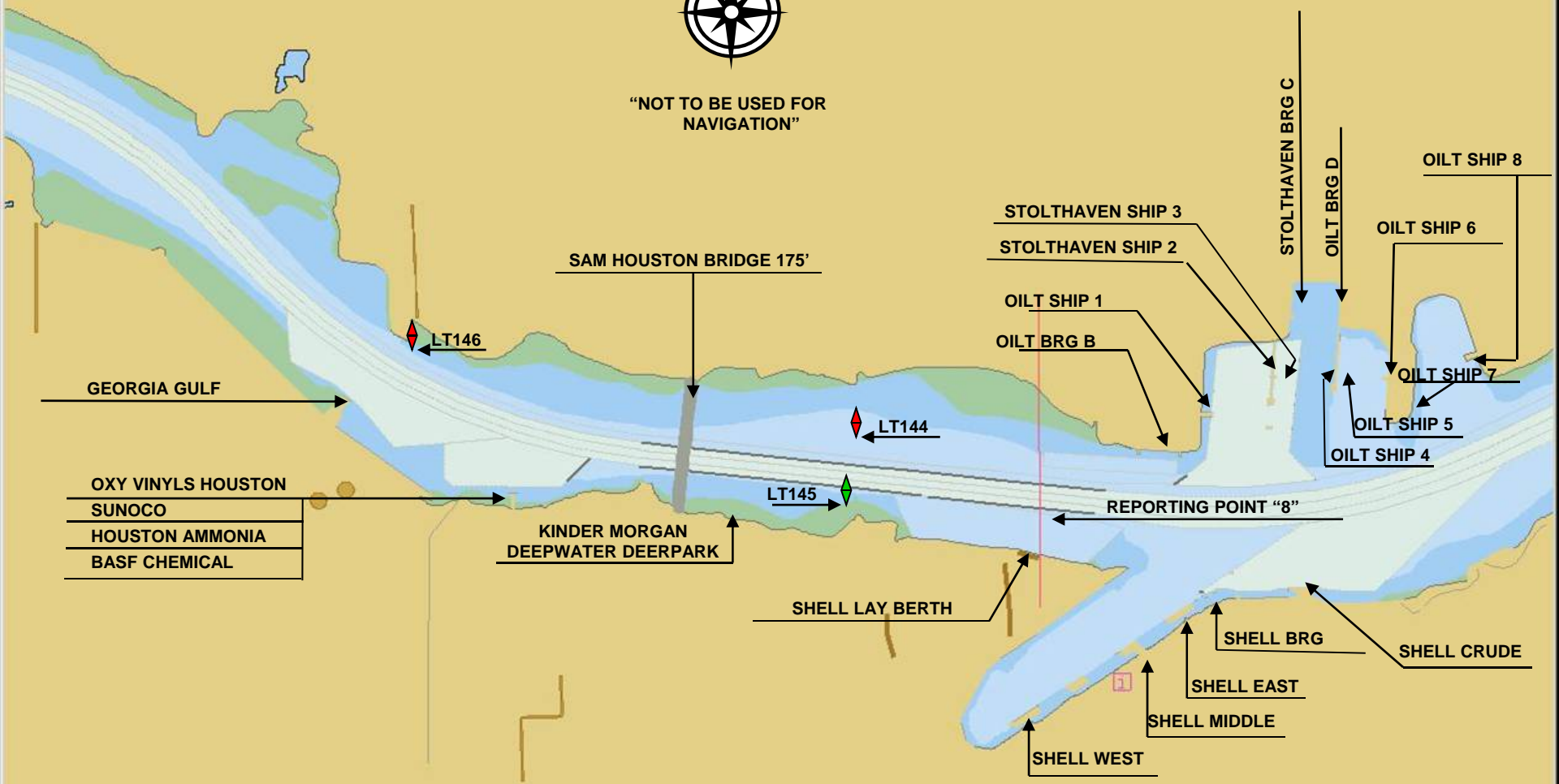
VOPAK BRG 1

VOPAK SHIP 1

VOPAK BRG 4



"NOT TO BE USED FOR NAVIGATION"



GEORGIA GULF

SAM HOUSTON BRIDGE 175'

LT146

LT144

LT145

KINDER MORGAN DEEPWATER DEERPARK

SHELL LAY BERTH

STOLTHAVEN SHIP 3

STOLTHAVEN SHIP 2

OILT SHIP 1

OILT BRG B

STOLTHAVEN BRG C

OILT BRG D

OILT SHIP 8

OILT SHIP 6

OILT SHIP 7

OILT SHIP 5

OILT SHIP 4

REPORTING POINT "8"

OXY VINYLs HOUSTON  
SUNOCO  
HOUSTON AMMONIA  
BASF CHEMICAL

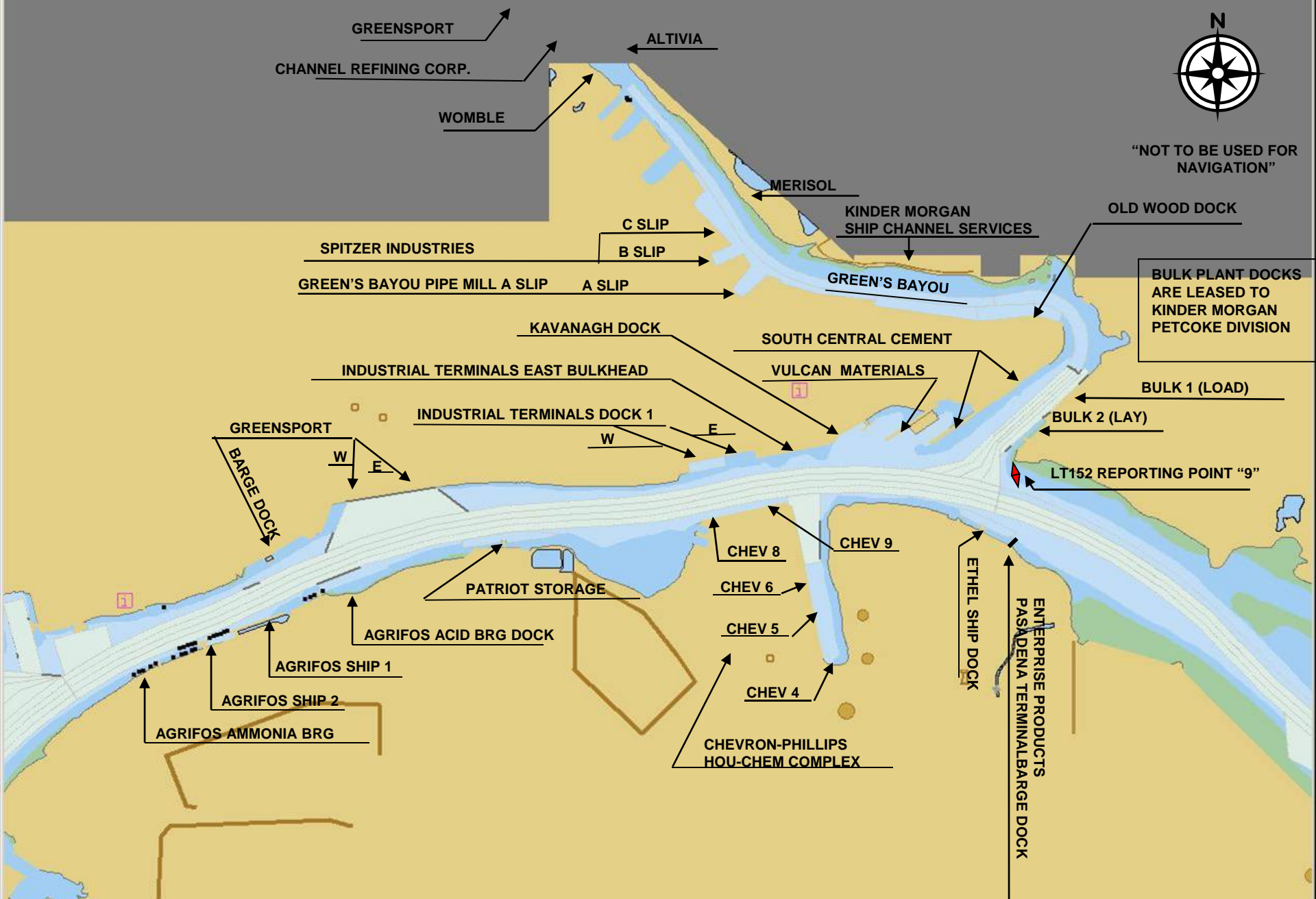
SHELL BRG

SHELL CRUDE

SHELL EAST

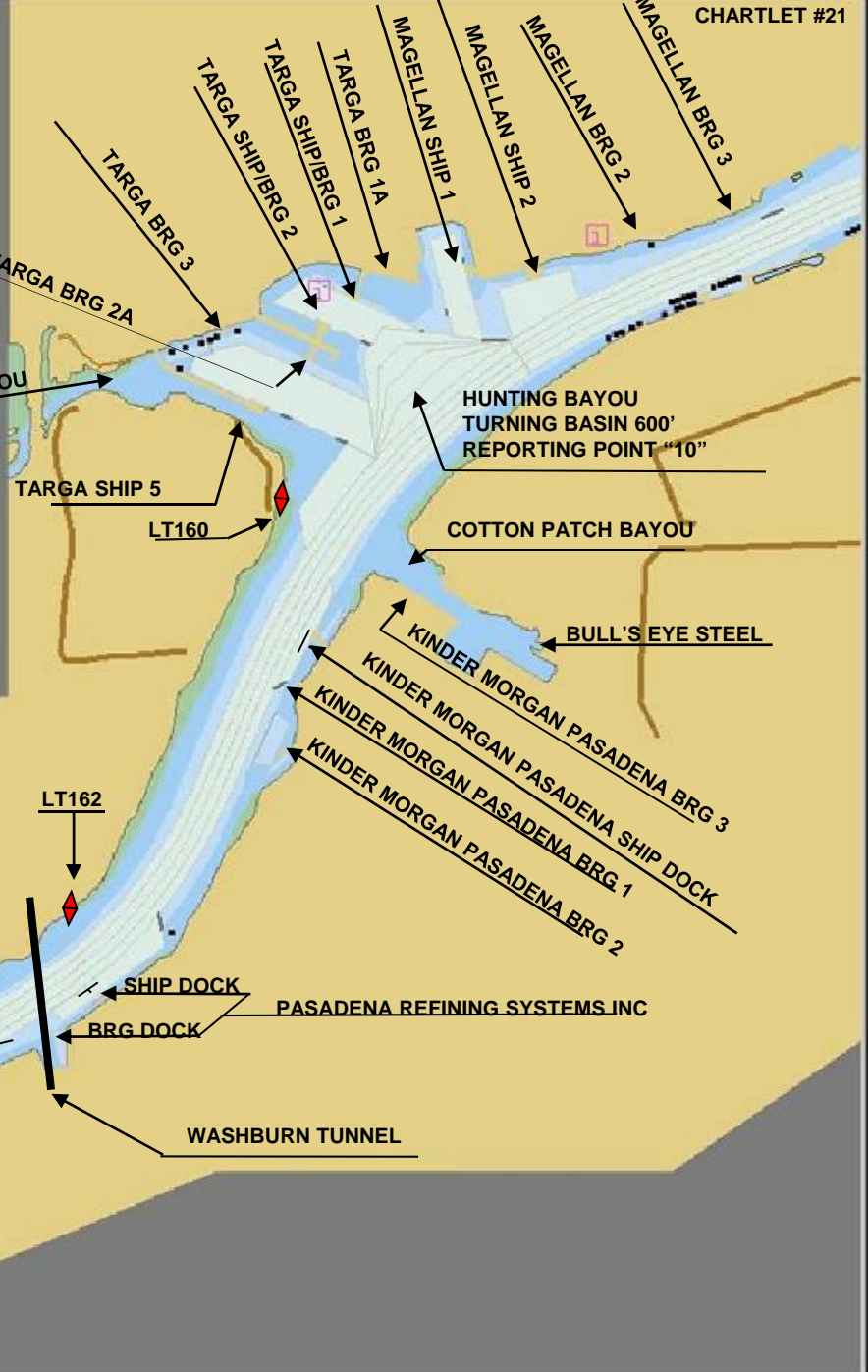
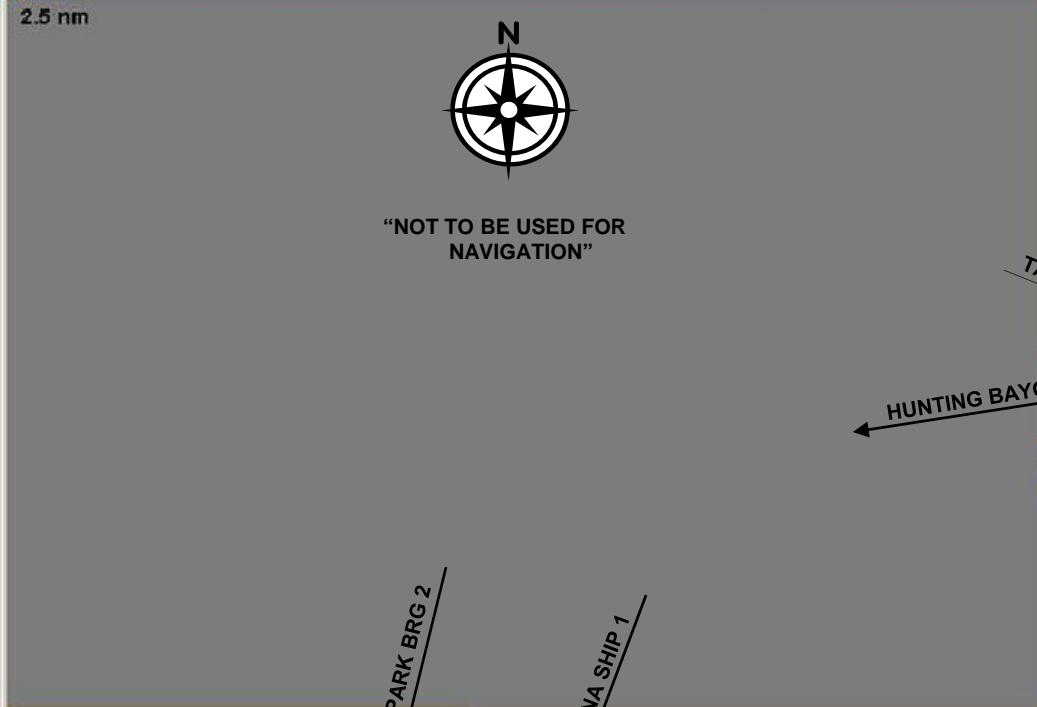
SHELL MIDDLE

SHELL WEST





"NOT TO BE USED FOR NAVIGATION"



KINDER MORGAN SHIP 2

KINDER MORGAN GALENA PARK BRG 2

KINDER MORGAN GALENA SHIP 1

KINDER MORGAN GALENA SHIP 3  
KINDER MORGAN GALENA BRG 3  
HOUSTON CEMENT EAST  
KINDER MORGAN GALENA SHIP 4

PASADENA HIGHLINES 197'  
RELIANT PASADENA

CROWN BEND  
GULF COAST WASTE

LT162

SHIP DOCK  
BRG DOCK

PASADENA REFINING SYSTEMS INC

WASHBURN TUNNEL

HUNTING BAYOU

TARGA SHIP 5  
LT160

HUNTING BAYOU  
TURNING BASIN 600'  
REPORTING POINT "10"

COTTON PATCH BAYOU

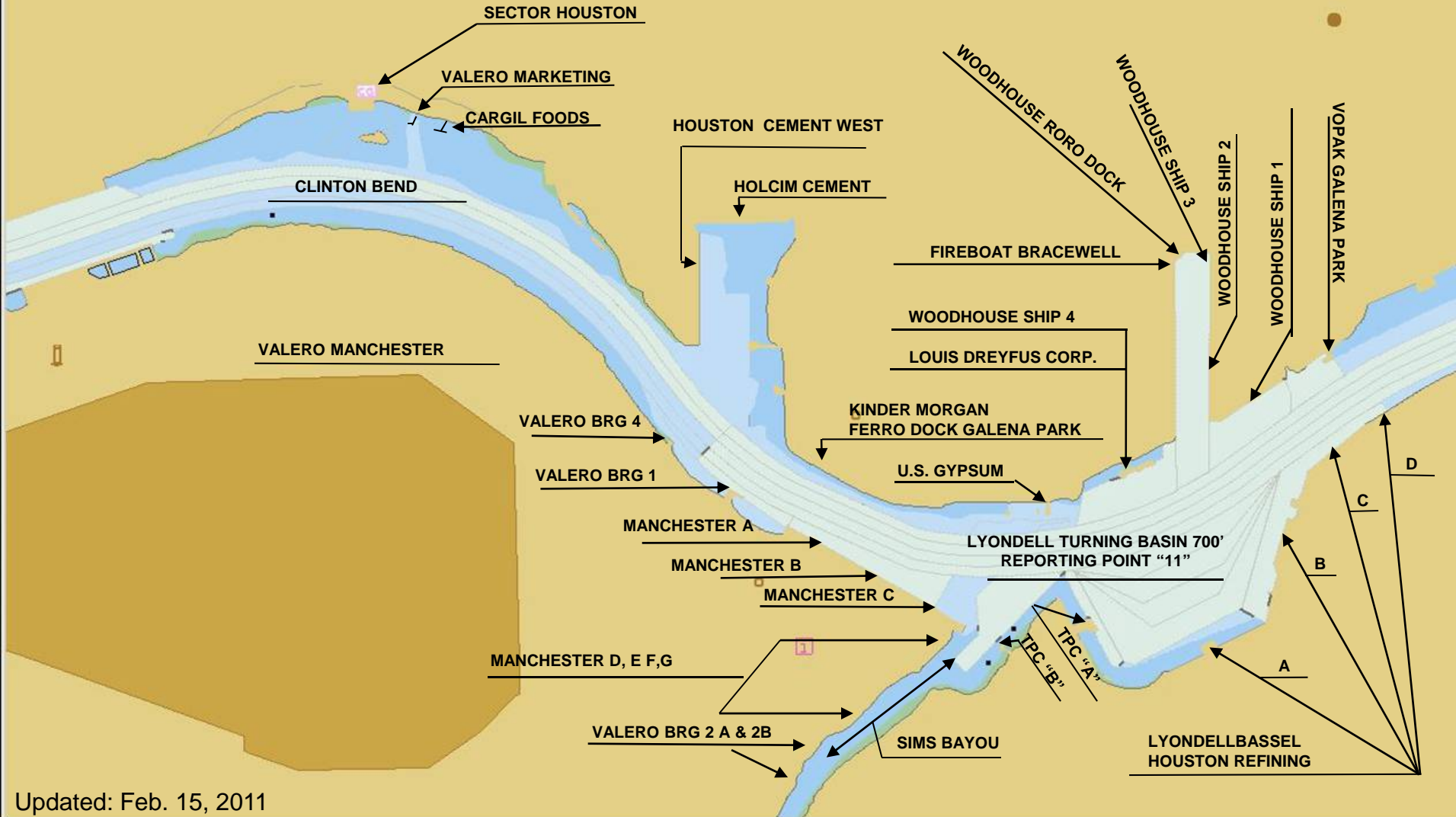
BULL'S EYE STEEL

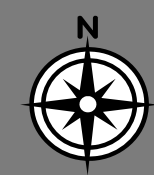
KINDER MORGAN PASADENA BRG 3  
KINDER MORGAN PASADENA SHIP DOCK  
KINDER MORGAN PASADENA BRG 1  
KINDER MORGAN PASADENA BRG 2

TARGA BRG 3  
TARGA BRG 2A  
TARGA SHIP/BRG 2  
TARGA SHIP/BRG 1  
TARGA BRG 1A  
MAGELLAN SHIP 1  
MAGELLAN SHIP 2  
MAGELLAN BRG 2  
MAGELLAN BRG 3



"NOT TO BE USED FOR NAVIGATION"





“NOT TO BE USED FOR NAVIGATION”

